



## Nemo III – 4 Days North Itinerary



The Nemo III is a large trans-oceanic, 75-foot, double-hull motor catamaran; a wonderfully stable cruising vessel. Nemo III was specially designed to take up to 16 passengers, accommodated in eight double cabins, each with a private bathroom. The ingeniously designed salon, vast cockpit, together with a Jacuzzi, and unique exterior surface make this beautiful catamaran an exceptional choice for your Galapagos cruise.





## Itinerary

- Day 1 Sunday:** AM / Baltra - PM / SANTA CRUZ: Bachas Beach
- Day 2 Monday:** AM / GENOVESA: Prince Phillip's Steps - PM / Darwin Bay
- Day 3 Tuesday:** AM / SANTIAGO: Sullivan Bay - PM / SANTA CRUZ: Dragon Hill
- Day 4 Wednesday:** AM / SANTA CRUZ: Breeding Center Fausto Llerena - Baltra



### Day 1 Baltra - Arrival at the airport in Galapagos

Upon arrival at Baltra you will be met by the crew from the Nemo III and your Galapagos experience will begin.

*Over the next glorious 4 days you will be visiting the following islands and visitor sites:*

## Santa Cruz - Bachas Beach

A beautiful white sandy beach punctuated by lava formations. The wonderfully soft sand here makes it a favourite site for nesting sea turtles. Here you will also see White Mangroves, one of the four mangrove species found in the Galapagos. There is a small coastal lagoon behind the sand dunes where Flamingos, Stilts, Pintail ducks and other water birds are regularly seen.

**Activities:** Walking along the beach, swimming, snorkelling. **Difficulty:** Easy  
**Type of Landing:** Wet landing  
**Highlights & Animals:** World War II remnants, Sally Lightfoot Crabs, Hermit Crabs, Black-necked Stilts, Whimbrels, Flamingos, Sea Turtles



## Day 2

### Genovesa (Tower)

A highlight of any visit to the Galapagos, a truly beautiful island thanks to the richness of its birdlife. Located in the northeast portion of Galapagos, the island is an outpost for many seabirds (as is Española in the South). Interestingly there are no land reptiles here and only very small Marine Iguanas, due to direction of ocean currents which apparently would not have carried terrestrial animals here. You will visit the following sites.



### Genovesa - Darwin Bay

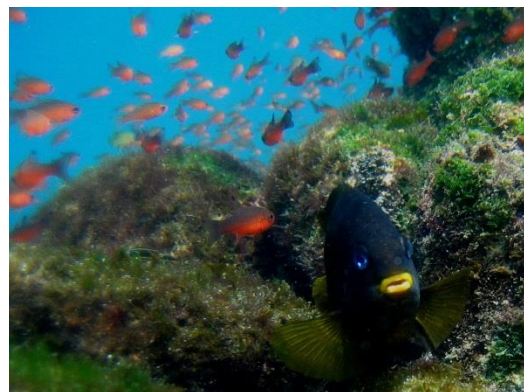
This bay is actually the caldera of an extinct, partially eroded volcano, with the surrounding cliffs forming the inner portion of the rim. You will land on a coral beach, and will immediately be struck by the amount of birdlife. The trail is loaded with Great Frigatebirds (mating season from February to May), Red-footed Boobies nesting in the mangroves, Swallow-tailed Gulls, Lava Gulls, Yellow-crowned Night Herons. Your trail takes you past a beautiful tide pool area where herons try to catch small fish.

**Activities:** Hiking (0.9 mi / 1 ½ km), snorkelling, kayaking & dinghy ride

**Difficulty:** Easy/moderate

**Type of Landing:** Wet landing.

**Highlights:** Nazca Boobies, Red-footed Boobies, Great Frigatebirds, Swallow-tailed Gulls, mangroves, coral pebbles beach. Snorkelling: rays, colourful reef fish and Hammerhead Sharks





### El Barranco or Prince Philip's Steps

The tour begins with a great dinghy ride along the base of the cliffs where you see Red-billed Tropicbirds trying to make a precise landing in their nest. Squadrons of Frigatebirds are seen flying back and forth, whilst Red-footed Boobies perch on branches of Palo Santo trees which seemingly grow out of the cliffs. Once you arrive on land and climb to the cliff-top, you enter an area where nesting Nazca Boobies and Great Frigatebirds are found. It is also a great place to see Galapagos Doves and Vampire Finches (Sharp-beaked Ground Finches) ...ask your guide for the full story on the name! You will also see a large colony of Storm Petrels which attracts Short-Eared Owls, often observed stalking at these small sea birds, even during the day.

**Activities:** Hike (0.9 mi / 1 ½ km)

**Difficulty:** Moderate

**Type of Landing:** Dry, difficult landing

**Highlights:** Red-footed Boobies, Great Frigatebirds, Short-eared Owls, Storm Petrels, Galapagos Doves, Darwin Finches.

### Day 3

**Santiago – Sullivan Bay** This site is of great geological interest and is located southeast of Santiago Island. Sullivan Bay offers a rare look at a recently formed lava field. Located on the eastern coast of James Island, just across from Bartolome, this lava field is thought to have been created in eruptions that took place around 1890.

**Activities:** Hiking (1.3 mi / 2 km) swimming and snorkelling

**Difficulty:** Moderate.

**Type of Landing:** Dry landing at the rocky shore and a wet landing at the white sand beach

**Highlights & Animals:** Pahoehoe lava flows, which has hardened in accordion-style formation. Small glass-like bubbles of lava can be found, called "hornitos". Penguins in the coastline.



### **Santa Cruz – Cerro Dragon or Dragon Hill**

After a dry landing, the walk will take you along the edge of a salt water lagoon behind the beach where you can often see Flamingos, Pintail Ducks, Common Stilts and other bird species. A short walk inland, offers a great view of the bay and a nesting site for Land Iguanas, many of which were repatriated back to Cerro Dragon by the Charles Darwin Research Station, after their near-extinction due to feral dogs and cats.

**Activities:** Hiking 1.5 mi. Snorkelling

**Difficulty:** Moderate

**Type of Landing:** Dry landing

**Highlights & Animals:** Coastal lagoon with variety of water birds: Herons, Stilts, Pintail Ducks, Oystercatchers, Flamingos. Giant Cactus, Land Iguanas, Darwin Finches, Mockingbirds. Snorkel: Parrotfish, Puffers, Snappers, Sea Turtles.



## Day 4

### Santa Cruz - Charles Darwin Research Station

The Charles Darwin Research Station offers a great chance to learn about the work being done to conserve and protect the islands wildlife. For some visitors (depending on the time of year) this is the only time to see Giant Tortoises and certainly the closest range opportunity. It is also a great chance to see the Tortoise Rearing Centre.

**Activities:** Walking (1.2 mi/2 km)

**Difficulty:** Easy

**Type of Landing:** Dry landing

**Highlights & Animals:** Giant Tortoises, Land and Marine Iguanas, Mockingbirds, Darwin Finches



After this final visit, you will be transferred to Baltra for your flight back to the mainland, or continue your adventure in Galapagos with an extension staying on one of the inhabited islands.

**Please note:** *Itineraries are unlikely to change significantly but are subject to change. Weather, wildlife breeding, instructions from the Galapagos National Park, specific abilities and interests of passengers as well as operational matters may cause your guide or captain to change the times or nature of your visits. Your guide will always endeavour to have the best itinerary for you within these constraints.*



"All the flights and flight-inclusive holidays in this document are financially protected by the ATOL scheme. When you pay you will be supplied with an ATOL Certificate. Please ask for it and check to ensure that everything you booked (flights, hotels and other services) is listed on it. Please see our booking conditions for further information or for more information about financial protection and the ATOL Certificate go to: [www.atol.org.uk/ATOLCertificate](http://www.atol.org.uk/ATOLCertificate)"



